

1219 Cobham Avenue
Pretoria, 0186
South Africa
+27 (012) 403 0091

SmartPallet

A Cloud-based pallet tracking system

Product Overview

SmartPallet is a Cloud-based solution for tracking Returnable Transport Items (RTI) such as crates, bins, containers and pallets nested into pallet loads. SmartPallet can link to Goods Received Notes and Delivery Notes in order to keep track of RTI's dispatched to and received from each participant in the logistics chain. Through the SmartPallet platform, suppliers and clients can log in and view the location of each RTI in real time. Through improved visibility, the utilisation of RTI's is substantially improved.



Pallet Identification

SmartPallet supports a number of mechanisms for the identification of RTI's. These include:

- Barcode labels
- Passive RFID (HF and UHF) labels
- RTLS (Real Time Location Systems)

Depending on the type of RTI, the goods and how the RTI is handled, up to 4 labels per item could be required.

Reader and installation

SmartPallet supports a range of barcode and RFID readers in different formats, protocols and frequencies. This includes the following:

- RFID and barcode Handheld readers
- RFID Dock door portal readers
- RFID Conveyor belt readers

The data from these readers is stored and forwarded to the SmartPallet platform.



SmartPallet Platform

The SmartPallet Platform is web based and Cloud hosted software which provides real time visibility of RTI and RTI movements to all participants in the logistics chain. Each member of the chain can log in and view:

- Number of RTIs on their site
- Number of RTIs dispatched per delivery note
- Number of RTIs received per goods received note

SmartPallet is scalable for fast rollout and supports interfaces for multiple sites and multiple entrances per site.

SmartPallet Features:

SmartPallet features include:

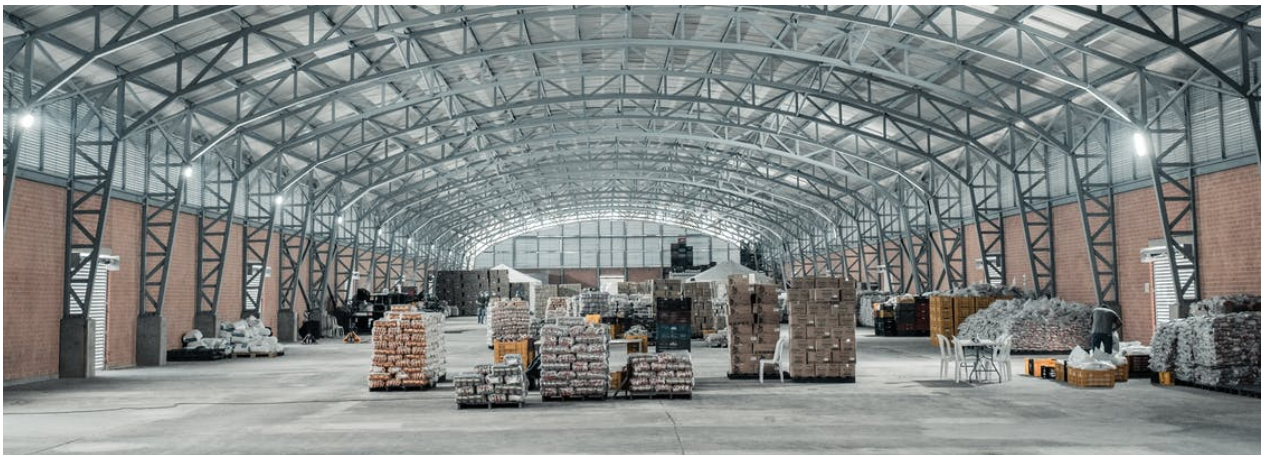
- Automated registration of RTIs
- Automated creation of nested pallet loads
- Tracking of nested pallets, cartons and pallet loads
- Deconsolidation of nested pallet loads

Other features include:

- Multiple tags per tracked pallet/carton
- High level of data integrity
- High reliability through automated handling of mixed pallet read errors
- Automated error handling and capturing of exceptions

Pallet management functionality includes:

- Reporting on pallet utilisation
- Reporting on pallet status and availability



Improved Utilisation:

SmartPallet can substantially improve RTI utilisation through the following features:

- **Audit Function:** Using a handheld scanner, any participant can audit the RTIs on site and upload the results to the SmartPallet platform for reconciliation
- **Status Function:** By installing scanners at the point of consumption, SmartPallet will be altered and will change the status of the RTI from Full to Empty, triggering the return collection of the RTI
- **Billing Engine:** SmartPallet includes a number of billing models which allows participants to be charged for RTIs which are not returned within the defined cycle time.



Systems Integration:

SmartPallet provides a number of interfaces for integration to Warehouse Management Systems and ERP systems.

Further Information:

<https://www.techsolutions.co.za/rfid-pallet-tracking>

Contact: sales@techsolutions.co.za